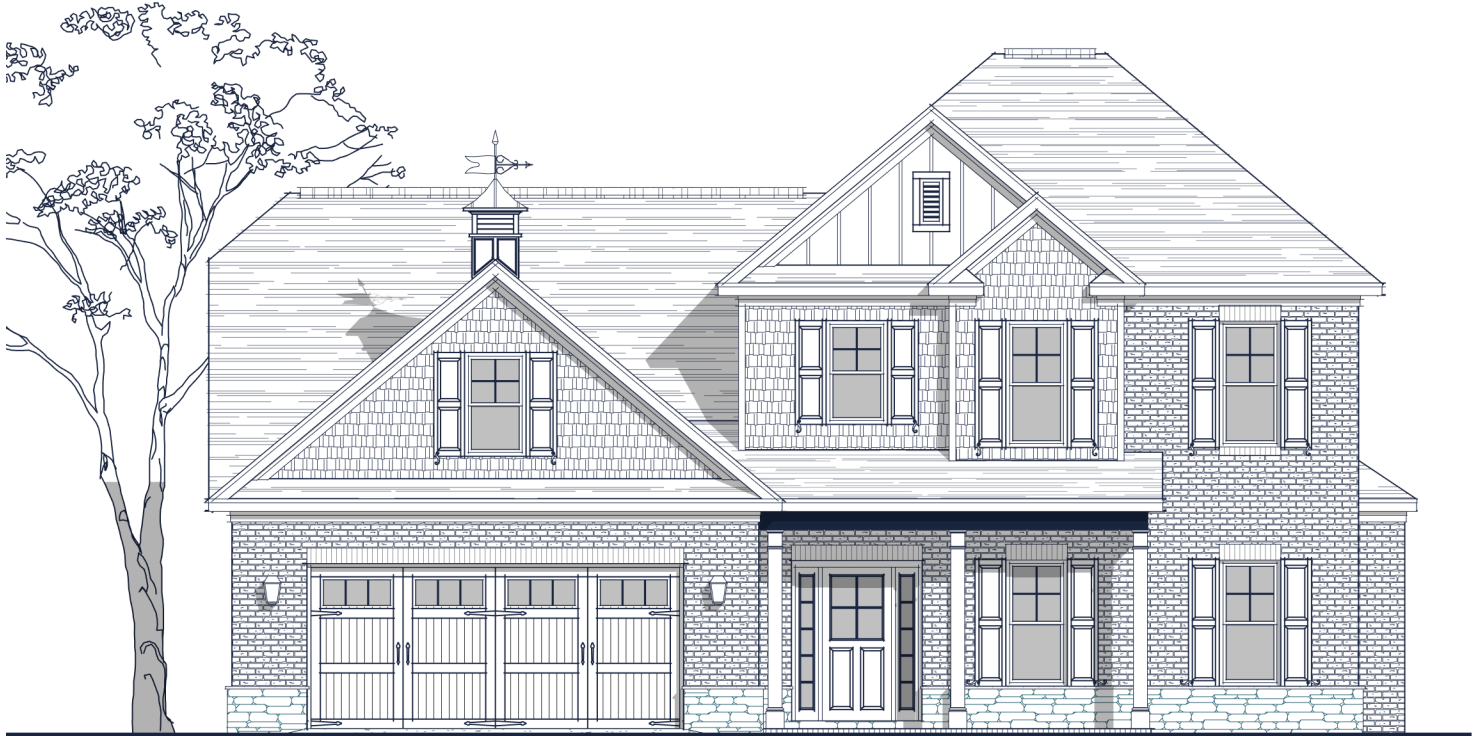




**ISENHOUR**  
HOMES

# FLOOR PLAN: ADELINE TRANSITIONAL



## Specs:

Bedrooms: 4  
 Bathrooms: 3.5  
 Square Footage: 2,898 Sq.Ft.  
 First Level: 1,515 Sq.Ft.  
 Second Level: 1,383 Sq.Ft.  
 Width: 48'-10"  
 Depth: 44'-10"

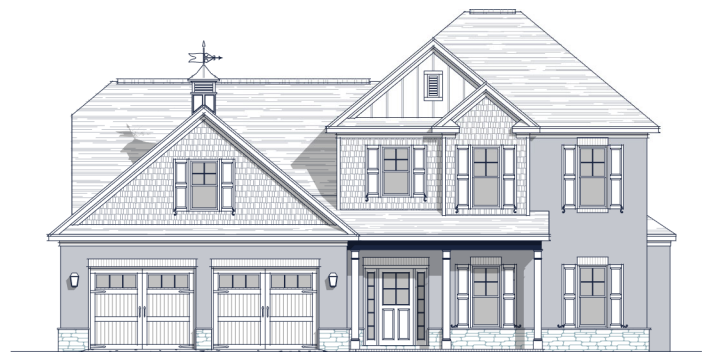
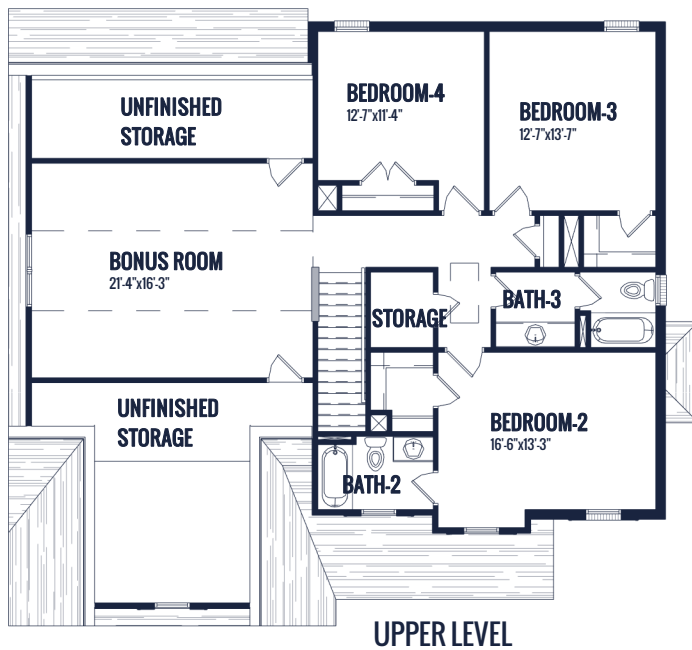
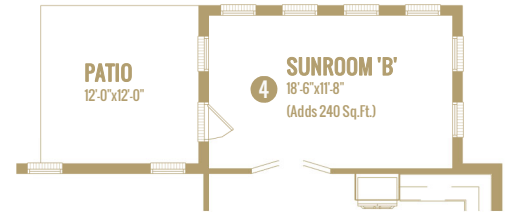
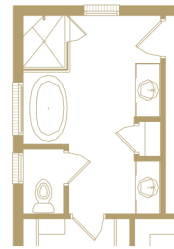
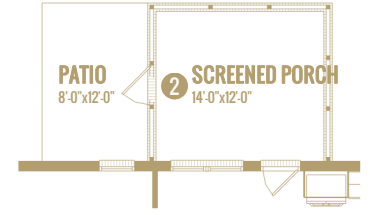
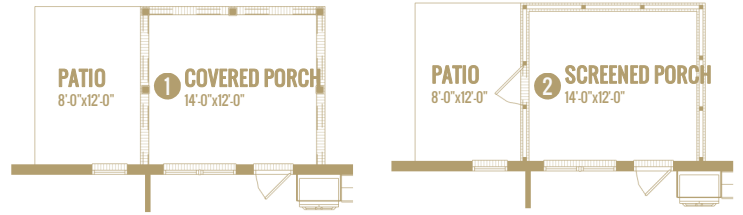
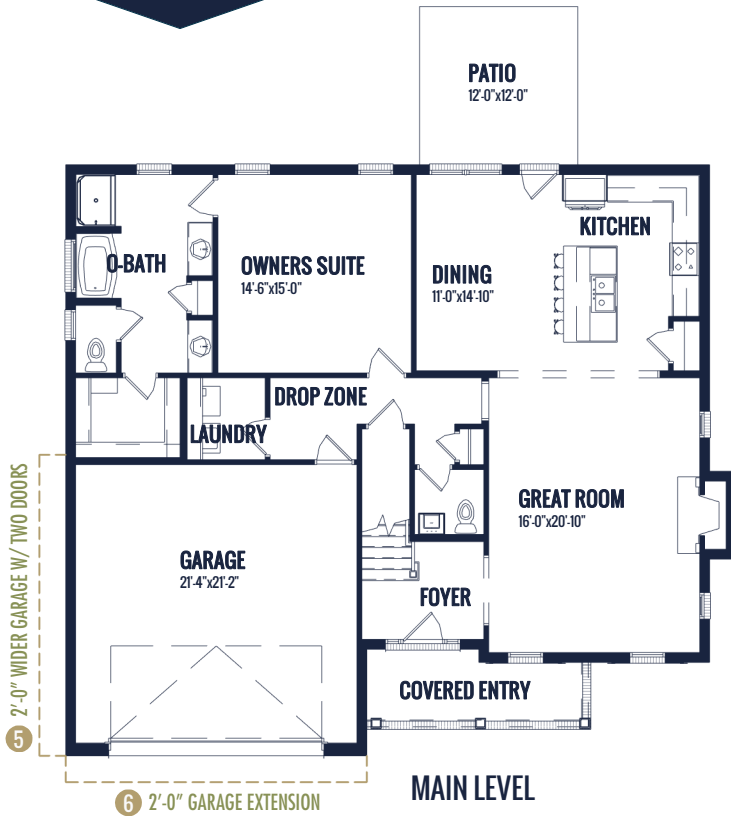
## Options Shown:

- 1 Covered Porch
- 2 Screened in Porch
- 3 Sunroom (Adds 168 Sq.Ft.)
- 4 Sunroom 'B' (Adds 240 Sq.Ft.)
- 5 2'-0" Wider Garage w/ Two Doors
- 6 2'-0" Garage Extension
- 7 Owners Bath Luxury Layout
- 8 Drop Zone Built-in
- 9 Upper Level Laundry Layout
- 10 Bath-3 Double Vanity

Watercolors, illustrations, and floor plans are for marketing purposes only and are subject to change at builder's discretion. Square footage is outside veneer and should be independently verified. This is not a legal document.  
 3/25/2019 1:14:00 PM



# FLOOR PLAN: ADELINE TRANSITIONAL



Watercolors, illustrations, and floor plans are for marketing purposes only and are subject to change at builder's discretion. Square footage is outside veneer and should be independently verified. This is not a legal document.  
3/25/2019 1:14:25 PM